

SEGA
GENESIS
16-BIT CARTRIDGE

RAINBOW ISLANDS™

★ EXTRA ★



TAITO™

Licensed by Sega Enterprises Ltd.
for play on the SEGA™ GENESIS™ System.



1. STORY

The Story of Bubble Bobble

One day, an evil wizard turned Bubby and Bobby into the bubble dragons, Bub and Bob, and kidnapped their girlfriends, Patty and Betty! Vowing to rescue them, the brothers ventured into the Cave of Monsters towards an uncertain destiny. Eventually, they reached Grumple Gromit's lair where he was keeping their girlfriends, and after a drawn-out battle, they were finally victorious. That was when they made a surprising discovery.

The defeated Grumple Gromit transformed into their long since missing parents!

After a tearful reunion all round—a delightful scene to behold—they noticed the brothers had also returned to their human forms!

The moment of happiness was bittersweet, however. The chilling truth was that the true nemesis that transformed their parents into Grumple Gromit and twisted their minds may still be out there. They silently sensed that a new day of reckoning was coming.

The Story of Rainbow Islands (Bubble Bobble 2)

Several years have passed, and Bubby and Bobby have learned Rainbow Magic from their parents.

One day, they decided to go treasure hunting at the Rainbow Islands, the site of their ancestral home. It soon became apparent that their true nemesis, the Boss of Shadow, had since resumed his evil machinations. Everywhere they went, their progress was hampered by his minions, as they trekked across the dangerous trap filled island chain.

The day they knew would come has finally arrived!

About Rainbow Islands –Extra–

By all accounts, Super Baron should have met an unclimactic end at the hands of the brothers, but things do not always turn out the way we would prefer.

Burning with fury, Super Baron redeployed his elite minions and issued a challenge to Bubby and Bobby to come and get him—if they dare!

How will it all end? Decide for yourself as you unravel the many mysteries that surround the Rainbow Islands!

In the EXTRA version, the first stage is Darius Island. Don't worry—it's very easy to clear! Even those who find it difficult to make their way through the 9 ORIGINAL version stages will feel right at home playing along to the familiar COSMIC AIR WAY BGM. The stage background is the same as ORIGINAL version, which are now at night, and Darius's enemies approach with new attack techniques. This apparent incongruity between the background and the enemy characters makes the game even more thrilling. Naturally, the boss attacks are more powerful and with greater variation, so be sure to watch them closely.

Be sure to enjoy Rainbow Islands' new EXTRA version!





2. HOW TO PLAY

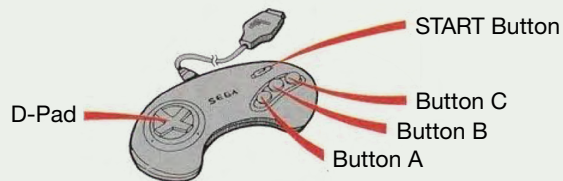
- Take control of Bubby and make your way to the top of the stage. Reach "GOAL IN!" to clear the round.
- Your adventure takes place on a chain of islands known as the Rainbow Islands. Each island is made up of 4 rounds. At the final round, a Boss is waiting who must be defeated to clear the island and progress to the next. There are various other enemies and obstacles to get past to claim the Rainbow Island treasure. The number of playable islands varies depending on the mode.
- If you run out of lives, it's game over!
- If you have a Continue at game over, press the START Button within 9 seconds to resume play.

Do you have what it takes to unravel the mysteries of the Rainbow Islands?



3. BASIC CONTROLS

- Rainbow Islands –Extra– is a game for one player. Connect a Control Pad to Controller Port 1.



Start Button

Press to start a game. Press during gameplay to pause the game, and press while paused to resume.

D-Pad

Move Bubby left and right. It can also be used for Mode Selection.

Button A

Launch a Rainbow.

Button B

Jump.

The commands assigned to Buttons A, B and C can be changed in CONFIGURATION MODE.





4. CONFIGURATION MODE

- At the title screen, press the START Button to display the Main Menu. Select CONFIGURATION MODE and press the START Button to open the mode.
- Use the D-Pad \uparrow \downarrow to select a configuration item, and \leftarrow \rightarrow to change the setting.



- Align the cursor with EXIT and press the START Button to return to the Main Menu.

A) RANK

Set the game difficulty to:

EASY

NORMAL

MANIA

B) STOCK

The number of lives you have at the start of the game.

C) MODE

Set the game mode to EXTRA or ORIGINAL. ORIGINAL mode is a little easier to play.

D) CONTROL

Choose the function of each Control Pad button. The default setting is A: RAINBOW and B: JUMP.



5. POWER-UP ITEMS



Shoes

Increase your speed!



Red Pot

Increase your Rainbow launch distance!



Yellow Pot

Launch rapid fire Rainbows!

- Items appear for every 3 enemies defeated. Pick them up and use them advantageously! Some can also be found hidden around the game field.



6. GAMEPLAY TECHNIQUES

BASIC TECHNIQUES



Rainbow Attack

Launch a Rainbow to attack enemies. This is the most fundamental technique.

Rainbow Smash

Slam a Rainbow from underneath to smash it. You can also use this move to smash a chain of Rainbows.



Any enemies directly beneath the Rainbow will be blown away!

MOVEMENT TECHNIQUES

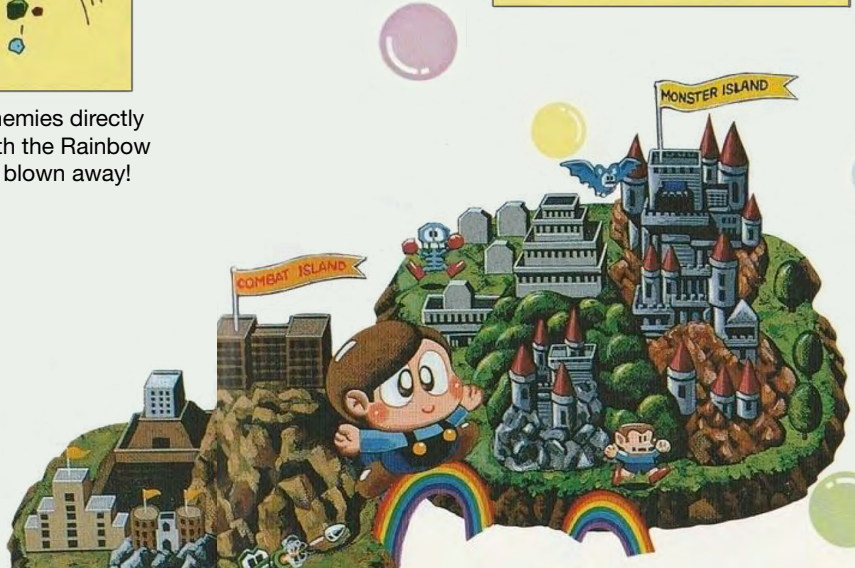


Rainbow Climb

Climb onto a Rainbow to use it as a temporary platform.

Rainbow Jump

Press the Jump button to launch off from the Rainbow.



SPECIAL TECHNIQUES



Trap

Enemies trapped between a Rainbow and the ground cannot escape until the Rainbow disappears.



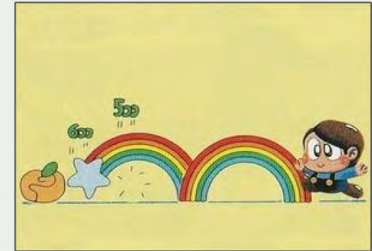
Rainbow Search

Launch a Rainbow across the ground to uncover hidden fruit and items and bring them to the surface. Some may be hidden in the air too, so search carefully!



Cling

If an airborne enemy enters a Rainbow from below, it will prevent them from moving until it disappears.



Collect from Afar

Pick up fruit and items from a distance by launching multiple Rainbows.





7. EXPLORING THE ISLANDS

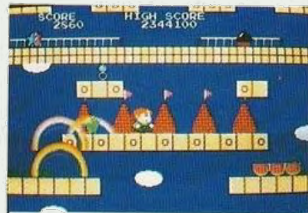
DARIUS ISLAND



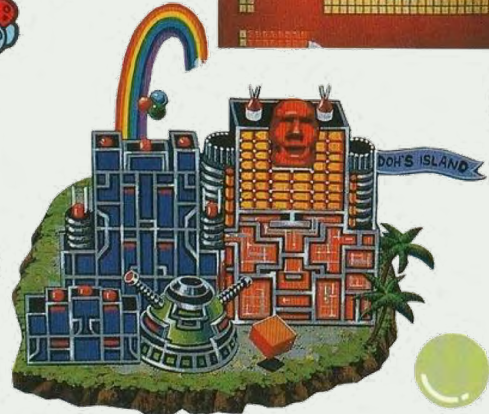
DRAGON ISLAND



MAGICAL ISLAND



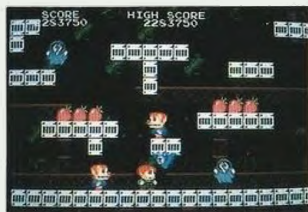
DOH'S ISLAND



INSECT ISLAND



MONSTER ISLAND



Unravel the Rainbow Island Mysteries

- Collect the 7 Diamonds by defeating enemies. Once you have them all, something special will happen!
- Fulfill certain secret conditions to reveal a Silver Door at the boss battle. What will you find on the other side?

PRECAUTIONS

Game cartridges are precision electronic equipment! Please take the following precautions when handling them.

Make sure the power is OFF!

Before removing a cartridge, make *doubly* sure that the console power is switched to OFF!

Cartridges are Delicate!

Do not subject your cartridges to strong shocks. Striking or stepping on a cartridge will damage it!

Don't Touch the Terminals!

Do not touch the terminal contacts or allow them to get wet. Doing so will damage the cartridge!

Storing your Cartridges

When choosing somewhere to store your cartridges, try to avoid places that are unusually hot, cold or humid.

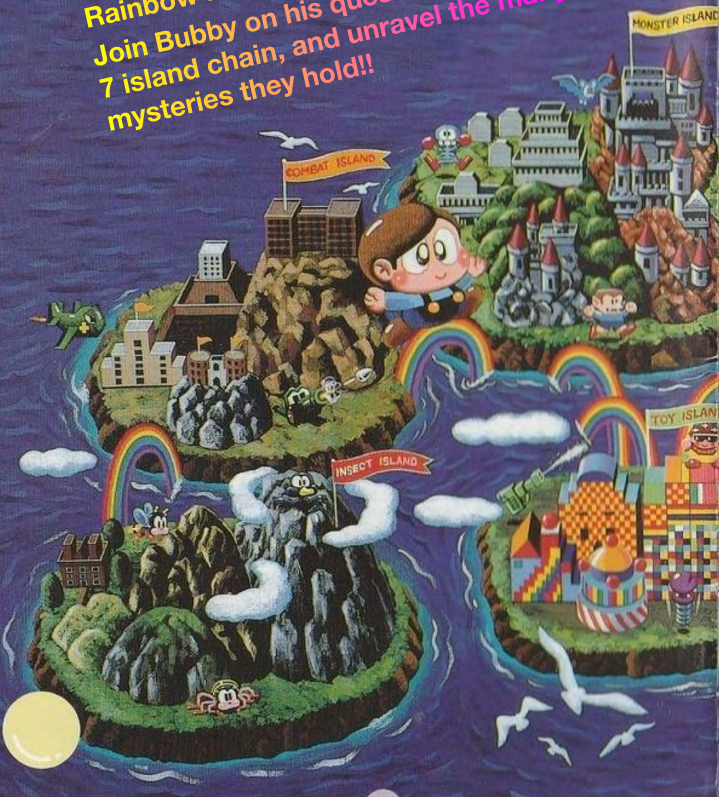
Avoid Chemical Cleaners!

Do not use chemicals such as benzine or solvents when wiping off dirt.

Precautions while Playing

If you play for an excessive period of time, your eyes will become fatigued. Try to take a 10 to 20 minute break for each hour of gameplay. Sit as far back from the TV as the controller cables will allow.

Rainbow Islands -Extra- by Taito
Join Bubby on his quest around the
7 island chain, and unravel the many
mysteries they hold!!



TAITOTM

TAITO CORPORATION

© TAITO CORPORATION 1987, 1990
ALL RIGHTS RESERVED.